

NEW JACKSON

M A N C H E S T E R



RENAKER

“A WORLD-CLASS SKYSCRAPER DISTRICT”

WELCOME TO NEW JACKSON, A NEW NEIGHBOURHOOD
LOCATED AT THE SOUTHERN GATEWAY TO
MANCHESTER CITY CENTRE.

The vision for New Jackson is to become a thriving new community within the city. A world-class skyscraper district with inspiring architecture, which is transforming the Manchester city skyline.

WELCOME

TO NEW JACKSON





CONTENTS

WELCOME

INTRODUCTION	1-3
CONTENTS	4-5

VISION

OVERVIEW	6-9
LOCATION	10-11
VALUES	12-13
SUSTAINABLE NEIGHBOURHOOD	14-17
LEARNING & EDUCATION	18
PUBLIC SPACES	19
HEALTH & WELLNESS	20-21
EAT & DRINK	22-25
SHOP & LEISURE	26-27
OVERVIEW	28-29
MASTERPLAN	30-31

LIVE HERE

LIVE HERE	32-33
OUR COMMUNITY	34-35
ENLIVENED SPACES	36-39
THE NEIGHBOURHOOD	40-41
DEANSGATE SQUARE	42-43
CROWN STREET -	
VICTORIA RESIDENCE & ELIZABETH TOWER	44-45
THE BLADE	46-47
THREE60	48-49
FUTURE DEVELOPMENTS	50-51
PERFECTLY LOCATED	52-53
MANCHESTER	54-59

RENAKER

ABOUT US	60-62
PLACEMAKING	63
CONTACTS	64

VISION

THE VISION IS TO CREATE A SUSTAINABLE AND ATTRACTIVE NEIGHBOURHOOD WHERE PEOPLE FEEL PROUD TO CALL HOME. WITH INSPIRING ARCHITECTURE, NEW JACKSON IS A WORLD-CLASS SKYSCRAPER DISTRICT, AND A THRIVING NEW COMMUNITY WITHIN THE CITY.

Renaker have taken what was underutilised brownfield land to create a unique area. We aim to develop an aspirational new neighbourhood, delivering high-quality, spacious homes and desirable amenities, where communities can thrive.

As the majority landholder, we are proud to be leading the creation of this new residential district.





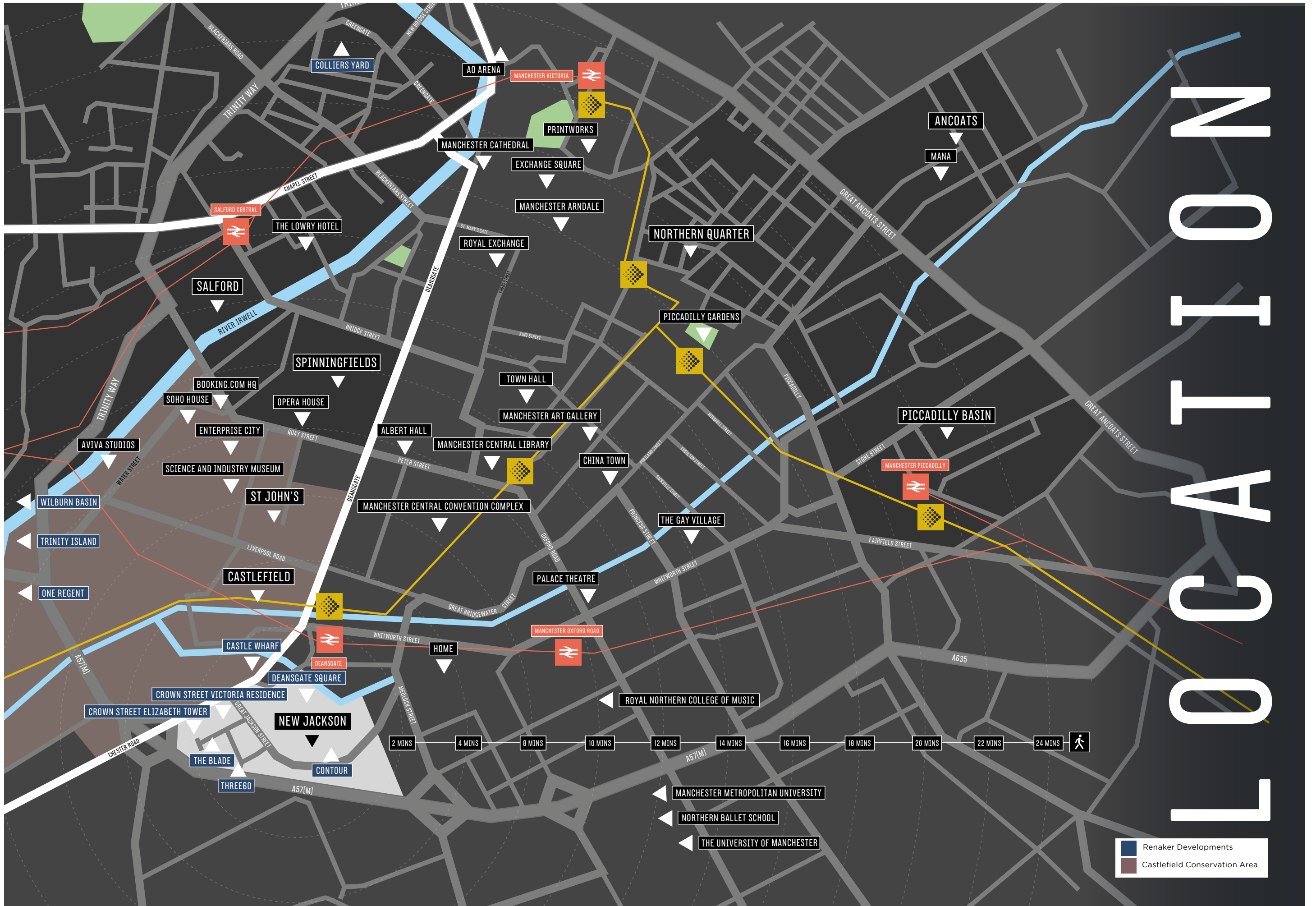
N

E

F

J

U



LOCATION

■ Renaker Developments
■ Castlefield Conservation Area



WORLD CLASS

SKYSCRAPER DISTRICT

Renaker have worked in partnership with leading architect, SimpsonHaugh to develop an aspirational new neighbourhood, delivering high-quality, spacious homes and desirable amenities, where communities can thrive.

Progress is well underway to date with more than 3,000 new homes already delivered, 988 homes under construction, and over 2,500 in the pipeline.

Renaker is creating this new neighbourhood, and once developed, it will comprise over 6,400 high-quality new homes. The area also includes a smoke-free city centre park with a children's play park, an NHS medical facility and a dental studio, as well as a variety of independent restaurants, bars, shops, and a cookery school.

WELCOMING
EXCEPTIONAL
CARING
WITH INTEGRITY
PROSPEROUS
CONFIDENT



CREATING A SUSTAINABLE NEIGHBOURHOOD

The creation of sustainable neighbourhoods for the long term, which include high-quality amenities that cater to the needs of the residents and the local community is important to us. We are proud to be developing much-needed infrastructure to enable people to call the city centre their home.

The neighbourhood is home to Crown Street Primary School - the first primary school to be built in the city centre in almost twenty years, and is also connected via several new pedestrian and cycle pathways, creating new sustainable travel routes for the local community. Significant investment has been made into New Jackson's public spaces, with the total value of improvements in excess of £25 million.

New Jackson also supports Manchester City Council's wider ambition to attract more people to live in the city centre long-term and bring up families.

“

“I HAVE LIVED IN MANY PLACES AND MANY APARTMENT BLOCKS, BUT TRULY SCARCELY ANYTHING CAN COMPARE TO THE LEVEL OF COMFORT AND THE QUALITY OF LIFE I GAINED IN HERE. YOU ALWAYS FEEL CARED FOR, WELCOMED, AND MOST IMPORTANTLY, YOU FEEL SAFE. RESIDENTS’ FEEDBACK AND IDEAS FOR IMPROVEMENTS ALWAYS FEEL APPRECIATED, AND TO THIS DAY, THINGS ARE BEING UPGRADED AND ADDED. LIVING HERE TRULY FEELS LIKE A COMMUNITY.

”

Rachel - Resident at Crown Street Victoria Residence

“

EVERYTHING IS SO WELL MAINTAINED, EVERYTHING IS CATERED FOR. IT’S ALL HERE...

”

Sarah - Resident at Deansgate Square



Concierge Management Team at Deansgate Square



CREATING SUSTAINABLE NEIGHBOURHOODS FOR THE LONG TERM



LEARNING & EDUCATION

- PRIMARY SCHOOL & DAY CARE NURSERY

We are delighted to have built Crown Street Primary School, the first primary school constructed within the city centre in nearly two decades. The school opened in September 2024 and will accommodate up to 210 children by 2030, growing each year as the children progress through the year groups. Currently, the school offers 30 reception places and 24 pre-school places for the local community.

Operated by the Laurus Trust, the school was selected as the city council's preferred operator, with approval from the Department for Education (DFE).

For more information on the school please visit: crownstreetprimaryschool.org.uk



PUBLIC SPACES

Once complete, New Jackson will feature over 8 acres of public spaces.

A new smoke-free public park, over 1 acre in size, has already been created, providing much-needed green space for residents and the local community. The park includes a children's play area, offering a safe space for children to enjoy.

New Jackson also boasts a riverside walkway along the River Medlock, connecting old Deansgate with the First Street cultural area, and includes the city's only riverside square at Deansgate Square.

- SMOKE-FREE PUBLIC PARK (INCLUDING CHILDREN'S PLAY AREA)

- NEIGHBOURHOOD CONNECTED VIA CYCLE PATHWAYS & WALKWAYS

- RIVERSIDE WALKWAY ALONG RIVER MEDLOCK ADJOINING THE CITY'S ONLY RIVERSIDE SQUARE

HEALTH & WELLNESS



New Jackson has a variety of health and wellness services including a medical centre, a private health & wellness clinic and a dentist. The medical centre, named New Jackson Medical Centre, is serviced by the NHS and offers much needed accessible primary health and care services for residents and the local community. The NHS medical centre is situated on the ground and first floor of Elizabeth Tower, Crown Street.

CLNQ

Deansgate Square,
Owen Street, M15 4YB
0800 058 4558 | clnq.com

CLNQ is a health & wellness clinic, and a doctor-led practice offering a range of aesthetic and medical treatments from dermatology, to health screening and private GP appointments.



DEANSGATE DENTAL STUDIO

Deansgate Square,
Owen Street, M15 4YB
deansgatedentalstudio.com

Deansgate Dental Studio provide dentistry services from routine check-ups through to cosmetic. The clinic focuses on delivering best in class care in a luxurious, modern industrial style setting.



EAT & DRINK

Kitten, Deansgate Square

New Jackson is home to a variety of carefully curated, Manchester-based independent operators, catering to all tastes. All operators are open seven days a week for total convenience.



ATOMECA
Deansgate Square,
Owen Street, M15 4YB
0161 989 6624 | atomeca.co.uk

ATOMECA is an all-day European drinkery, championing the best beverages and food from the UK and continental Europe.

SALVI'S
Deansgate Square,
Owen Street, M15 4TQ
0161 302 4439 | salvismanchester.co.uk

Salvi's offers a variety of authentic Italian cuisine, with much of its menu based on original family recipes created by the owner Maurizio's mother, Nonna Teresa.



KITTEN
Deansgate Square,
Owen Street, M15 4TW
0161 392 7913 | kittenrestaurant.com

Manchester's latest flagship dining destination blends modern Japanese fine dining with contemporary cocktails in a stunning setting.



Chit 'n' Chaat, Deansgate Square



Medlock Canteen, Deansgate Square



Chit 'n' Chaat, Deansgate Square

CHIT 'N' CHAAT
 Deansgate Square
 Owen Street, M15 4YB
 0161 392 6278 | chitnchaat.com

Chit 'n' Chaat's offers rich, aromatic flavours of India through a taste journey, expertly crafted by talented chefs.



Medlock Canteen, Deansgate Square

MEDLOCK CANTEEN
 Deansgate Square
 Owen Street, M15 4YB
 medlockcanteen.com

Inspired by American Diners and Parisian Bistros, Medlock Canteen is the latest concept from the team behind Belzan and Madre.



Medlock Canteen, Deansgate Square

SHOP & LEISURE

A curated selection of shops and leisure facilities is on offer at New Jackson.



Food Sorcery, Deansgate Square



FOOD SORCERY

Deansgate Square,
Owen Street, Manchester, M15 4UP
0161 989 6624 | foodsorcery.co.uk

Specialising in foodie team-building experiences and private dining, alongside its sociable and fun cookery classes, Food Sorcery offers something for everyone.

FLOURISH

Deansgate Square,
Owen Street, M15 4UP
07359 251 549 | flourishmanchester.com

Flourish, an award-winning family business, is firmly established as one of Manchester's most popular destinations for plant life. It advocates for a greener, more sustainable lifestyle.



GENERAL STORE

Deansgate Square,
Owen Street, M15 4YB
0161 883 7213 | general-stores.co.uk/deansgate

An innovative and independent convenience store, General Store places community and collaboration at its core. It blends traditional values with a modern shopping experience.

CLUB DE PADEL

New Jackson
Owen Street, M15 4TQ
clubdepadel.co.uk

Offering four courts, equipment, and merchandise, Club De Padel is a meanwhile-use leisure attraction that brings a dynamic fusion of tennis and squash to New Jackson.



GREEN SPACES

New Jackson offers much needed green space for the city centre. The neighbourhood already features a new, smoke-free public park that spans over 1 acre in size, and includes a children's play area.

SHOP & LEISURE

With restaurants, bars, and shops on-site, New Jackson offers everyone easy access to a wide range of desirable amenities and services.

EVENTS

A curated event calendar managed by our Head of Experience, combined with public spaces and a residents' app for each development, fosters a thriving community where everyone can get involved.

SUSTAINABILITY

New Jackson promotes sustainable travel with cycle routes and footpaths throughout the skyscraper neighbourhood.



FUTURE DEVELOPMENT

CGI of New Jackson, to be treated as general guidance only. © Renaker



PUBLIC CAR PARK

Operated and managed by CitiPark, New Jackson Car Park is open 24-hours and provides 391 safe and secure parking spaces, including 39 electric charging stations for the local community.



PUBLIC SPACES

New Jackson features high-quality public spaces for all to enjoy, including a public riverside square and walkway.

INSPIRING ARCHITECTURE

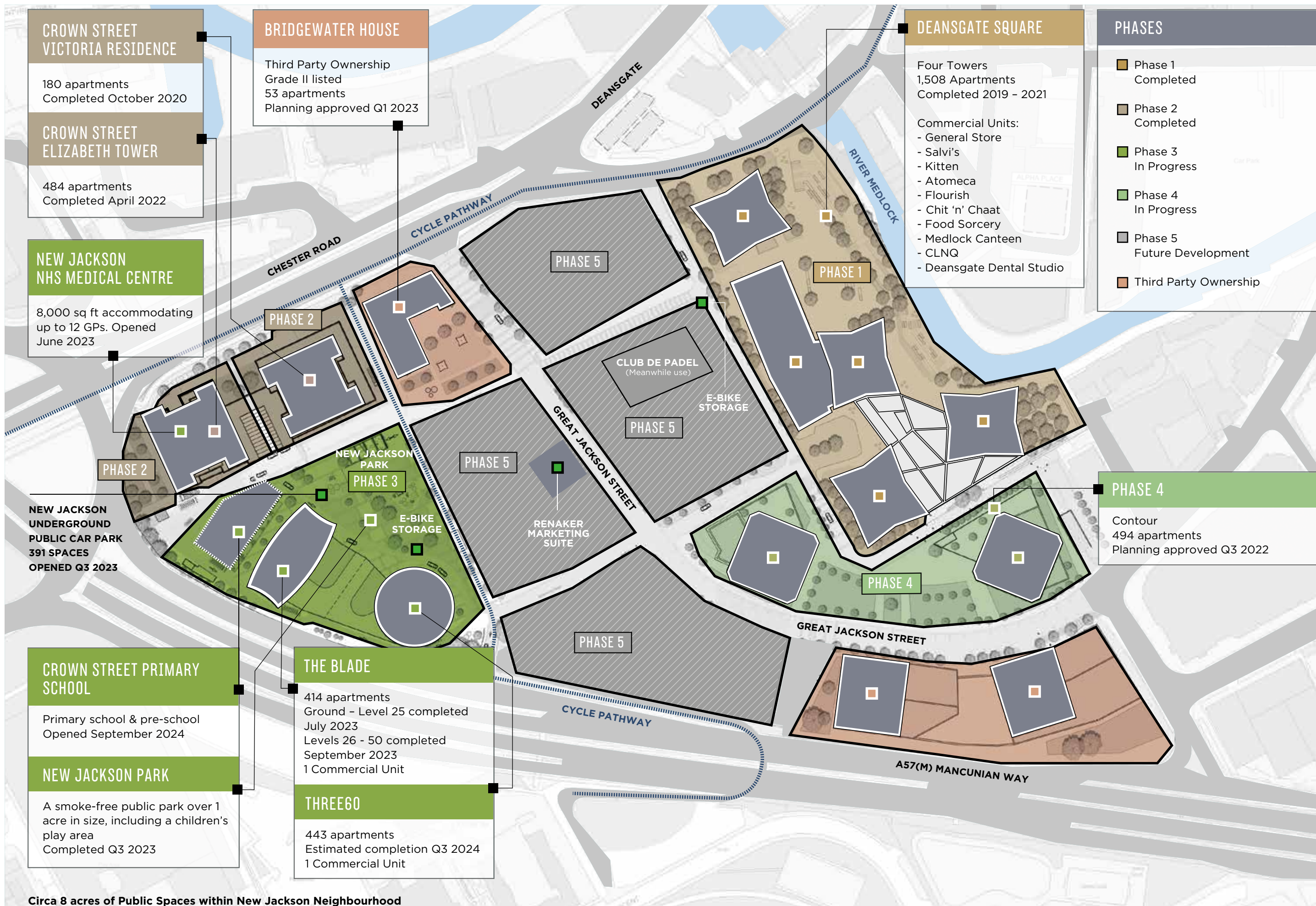
The landmark architecture by SimpsonHaugh puts New Jackson on the map, transforming Manchester into a skyscraper city that rivals London.

COMMUNITY

New Jackson has already become home to a brand new community of people. This has been made possible thanks to our friendly on-site teams and facilitated through our bespoke residents' apps.

EDUCATION & HEALTH

Amenities catered to resident's needs includes the creation of a new city centre primary school and nursery, an NHS medical centre, a health clinic and a dentist.



CROWN STREET VICTORIA RESIDENCE

180 apartments
Completed October 2020

CROWN STREET ELIZABETH TOWER

484 apartments
Completed April 2022

NEW JACKSON NHS MEDICAL CENTRE

8,000 sq ft accommodating up to 12 GPs. Opened June 2023

NEW JACKSON UNDERGROUND PUBLIC CAR PARK 391 SPACES OPENED Q3 2023

CROWN STREET PRIMARY SCHOOL

Primary school & pre-school
Opened September 2024

NEW JACKSON PARK

A smoke-free public park over 1 acre in size, including a children's play area
Completed Q3 2023

BRIDGEWATER HOUSE

Third Party Ownership
Grade II listed
53 apartments
Planning approved Q1 2023

DEANSGATE SQUARE

Four Towers
1,508 Apartments
Completed 2019 - 2021

Commercial Units:
- General Store
- Salvi's
- Kitten
- Atomeca
- Flourish
- Chit 'n' Chaat
- Food Sorcery
- Medlock Canteen
- CLNQ
- Deansgate Dental Studio

PHASES

- Phase 1 Completed
- Phase 2 Completed
- Phase 3 In Progress
- Phase 4 In Progress
- Phase 5 Future Development
- Third Party Ownership

PHASE 4

Contour
494 apartments
Planning approved Q3 2022

THE BLADE

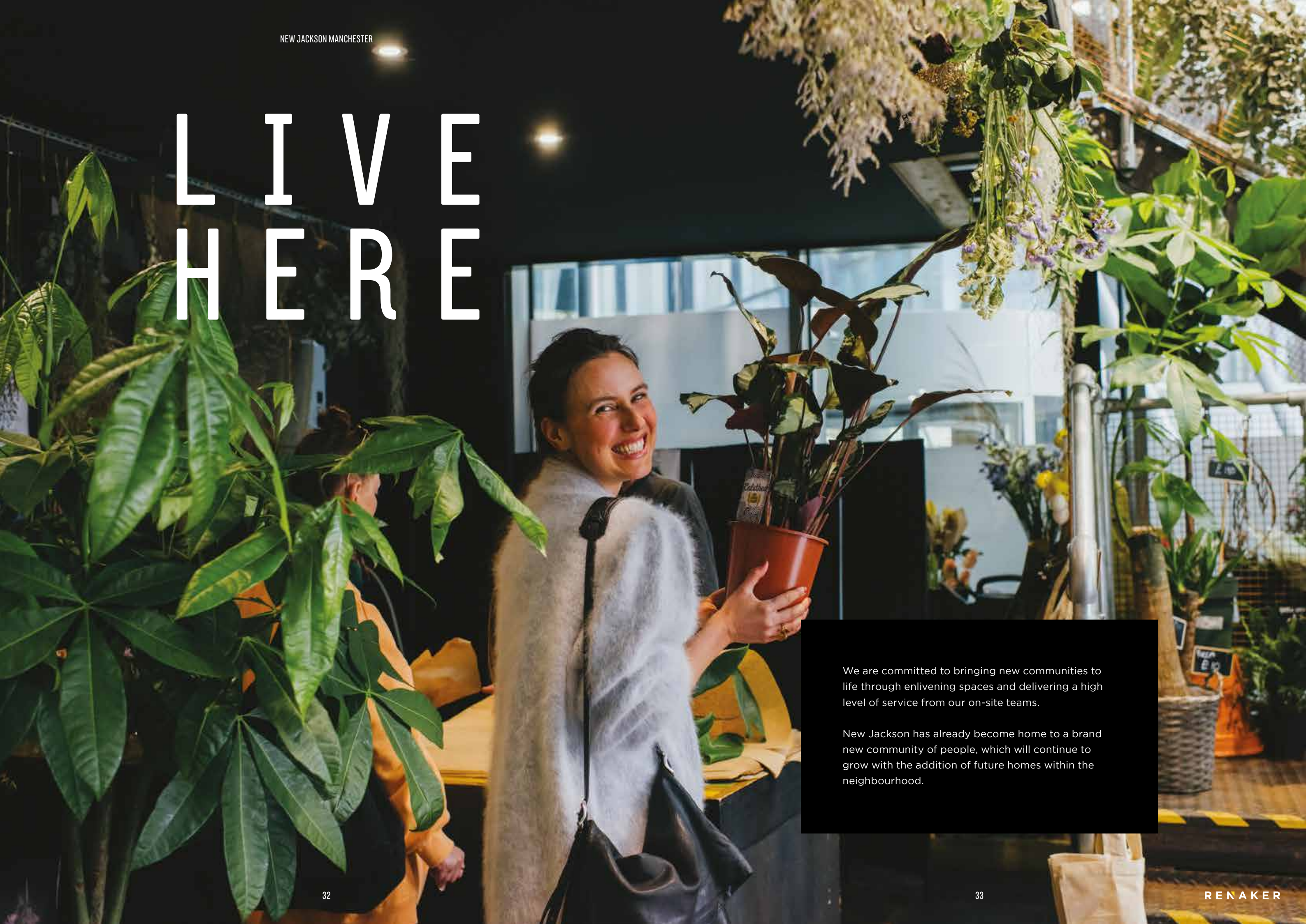
414 apartments
Ground - Level 25 completed July 2023
Levels 26 - 50 completed September 2023
1 Commercial Unit

THREE60

443 apartments
Estimated completion Q3 2024
1 Commercial Unit

Circa 8 acres of Public Spaces within New Jackson Neighbourhood

LIVE HERE



We are committed to bringing new communities to life through enlivening spaces and delivering a high level of service from our on-site teams.

New Jackson has already become home to a brand new community of people, which will continue to grow with the addition of future homes within the neighbourhood.



OUR COMMUNITY

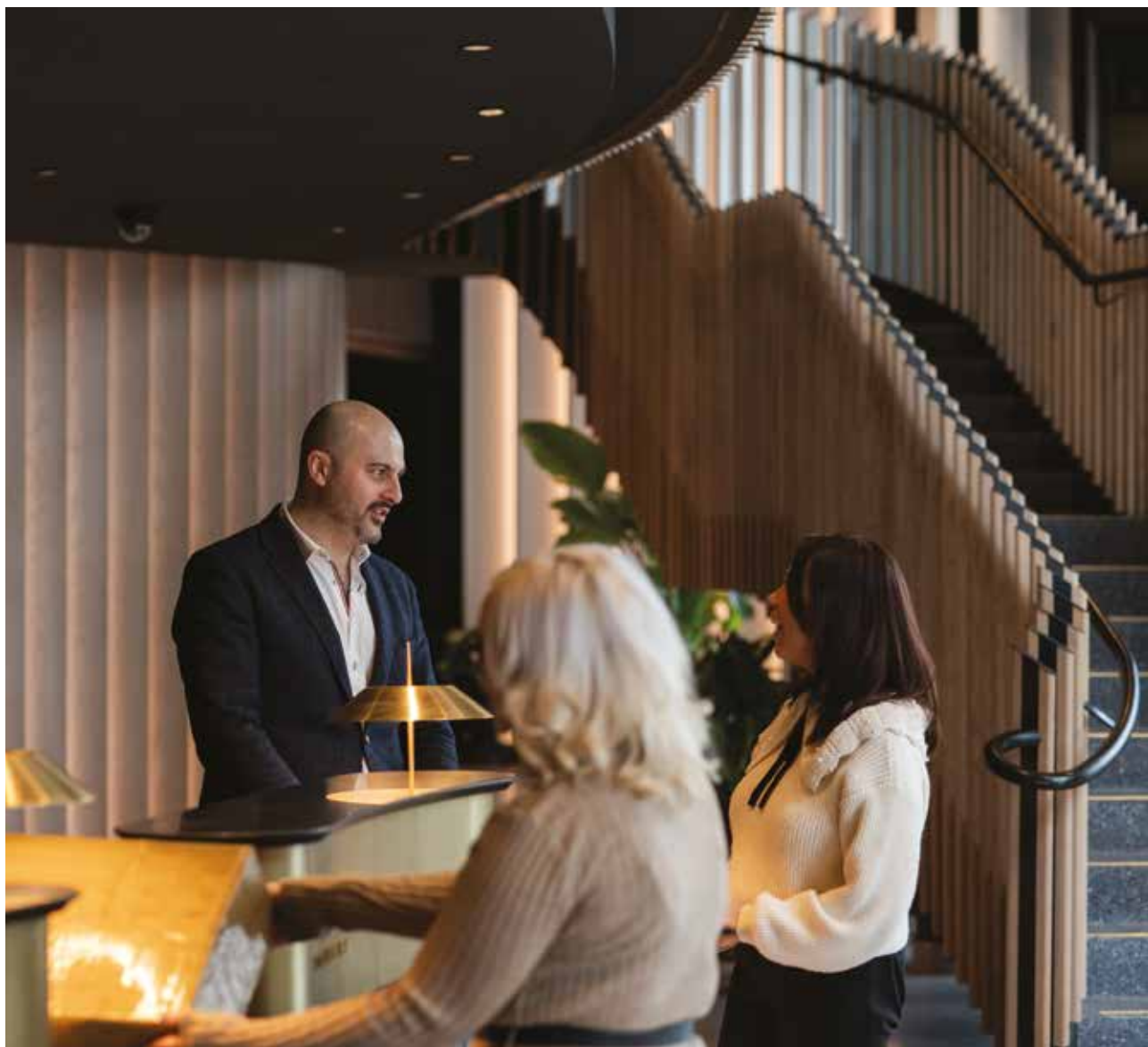


Jubilee Weekend - Deansgate Square

At Renaker, we are committed to creating sustainable new communities for the long term.

The creation of such communities is made possible thanks to our friendly on-site teams, a curated resident event programme running all-year round, our commercial operators and custom-made residents' app bespoke to each development.

ENLIVENED SPACES & HIGH-LEVEL SERVICE



ON-SITE TEAMS

Care has been taken with the recruitment of our on-site teams. Our Concierge teams with 5* hospitality backgrounds not only keep everything running smoothly, but elevate the service level akin to that of a luxury hotel.

Our experienced Health & Wellness teams with backgrounds ranging from personal trainers to rehabilitation experts, offer a warm and welcoming service within our residential gyms. Our Club Team at Deansgate Square also offer personal training sessions to residents of other developments.



Sound Bath Journey - Deansgate Square

CURATED EVENT PROGRAMME

Managed by our Head of Experience, their role is to help bring life to the local area to create a year-round curated programme of events, which aim to enliven the spaces for residents to enjoy, as well as the public.

CUSTOM-MADE RESIDENTS' APP

Each development has its own residents' app to encourage communication, and to help develop a community between the residents, on-site teams and commercial operators. The app has also provided us with anecdotal and genuine feedback of the wants and needs of those living in the developments, enabling us to take learnings for future developments. Residents at all our developments can also take advantage of our laundry service - comparable to services available at 5* hotels via our Laundry app.



Blok Event - Deansgate Square

“
 THE STAFF ARE GREAT AND THIS GOES BACK TO ALL THE LITTLE THINGS; THE SMILE, THE GOOD MORNING, THE ACCOMMODATING SPIRIT THEY HAVE WHEN YOU NEED SOMETHING. IT ALL ADDS TO THE EXPERIENCE AND MAKES IT A SPECIAL PLACE TO LIVE.
 ”

Matt - Resident, Deansgate Square



FIFTH Movement Children's Workshop - Deansgate Square



Code & Fly-A-Drone Event - Deansgate Square



Manchester Made Market - New Jackson

THE NEW JACKSON

NEIGHBOURHOOD

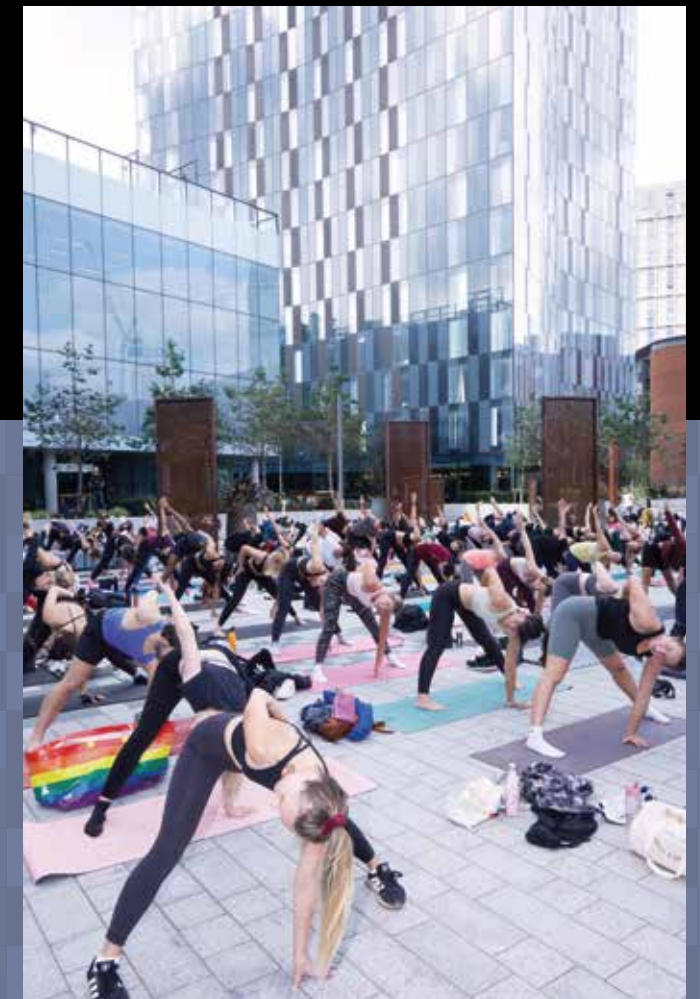
A COLLECTION OF HIGH-QUALITY DEVELOPMENTS, EACH WITH EXCEPTIONAL STAND-ALONE RESIDENTIAL AMENITY

This exciting new neighbourhood by Renaker offers residents an abundance of premium amenities exclusive to each development, as well as wider amenities for the neighbourhood and local community to enjoy.



Deansgate Square features 92,000 sq ft of high-quality residential amenity across The Club, the roof garden, concierge and business gallery. The development overlooks the River Medlock and is surrounded by high-quality public spaces with The Square, The Medlock Steps and The Garden. The Square features a mixture of carefully curated local and independent restaurants, bars and shops, and has been designed to accommodate events to bring life to the area.

newjacksonmanchester.com/developments

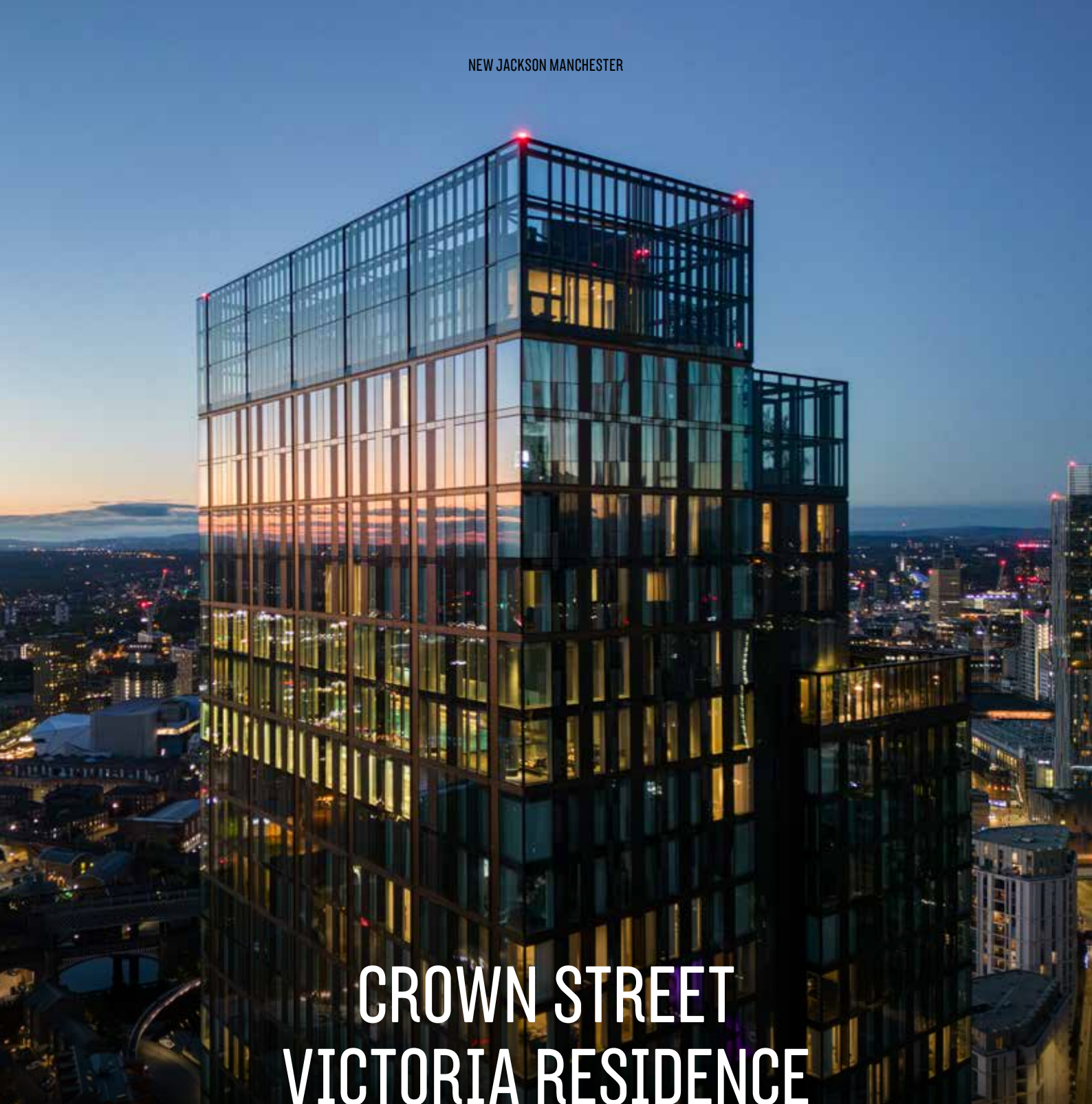


DEANSGATE SQUARE

4 TOWERS
 40 - 67 STOREYS
 1,508 APARTMENTS
 BUILD COMPLETE 2021
 SEPARATE AMENITY BUILDING
 ARCHITECT: SIMPSONHAUGH

Comprising 1,508 spacious, luxury apartments and penthouses across four towers with an unrivalled level of residential amenity, Deansgate Square is Manchester's premier development and has transformed the city skyline.





CROWN STREET VICTORIA RESIDENCE & ELIZABETH TOWER

2 TOWERS
21 & 51 STOREYS
664 APARTMENTS & 6 TOWNHOUSES
BUILD COMPLETE 2021 & 2022
SHARED AMENITY SPACE
ARCHITECT: SIMPSONHAUGH

Crown Street Victoria Residence and Elizabeth Tower offer elegant apartments, penthouses and townhouses in a highly sought-after location.



The development benefits from luxury, residential facilities such as a residents' lounge and private dining, 24/7 concierge, and a co-working space. There is a 20m swimming pool situated at 44 storeys making it the highest residential pool in the UK, as well as a state-of-the-art gymnasium, a holistic studio and two roof garden terraces all at 44 storeys, all comprising of unmatched views of the city.



newjacksonmanchester.com/developments

THE BLADE

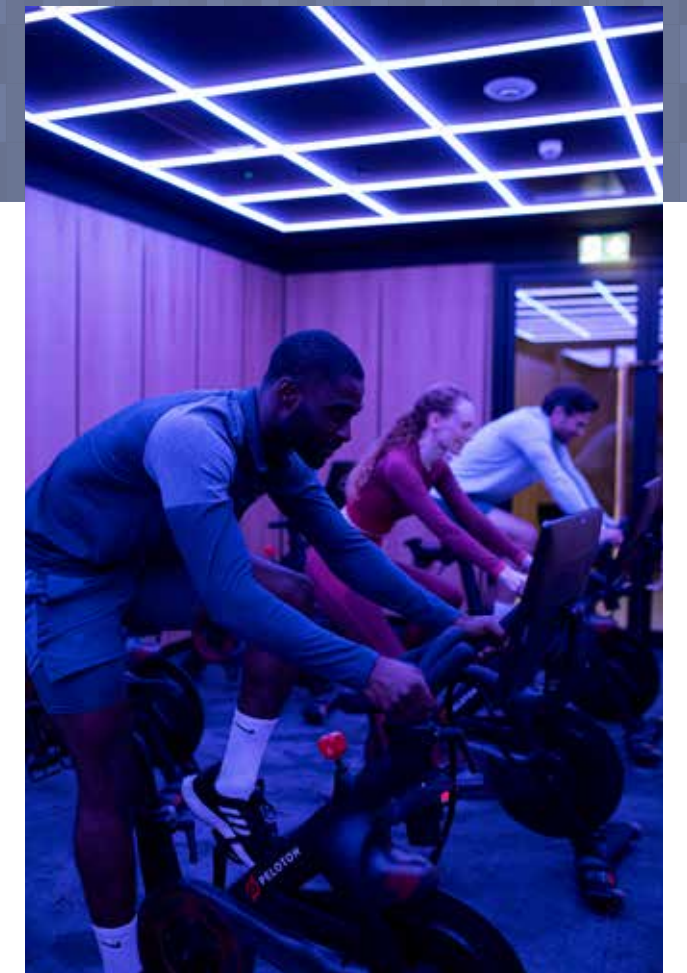
1 TOWER
 51 STOREYS
 414 APARTMENTS
 GROUND - LEVEL 25 COMPLETED JULY 2023
 LEVEL 26 - 50 COMPLETED SEPTEMBER 2023
 ARCHITECT: SIMPSONHAUGH

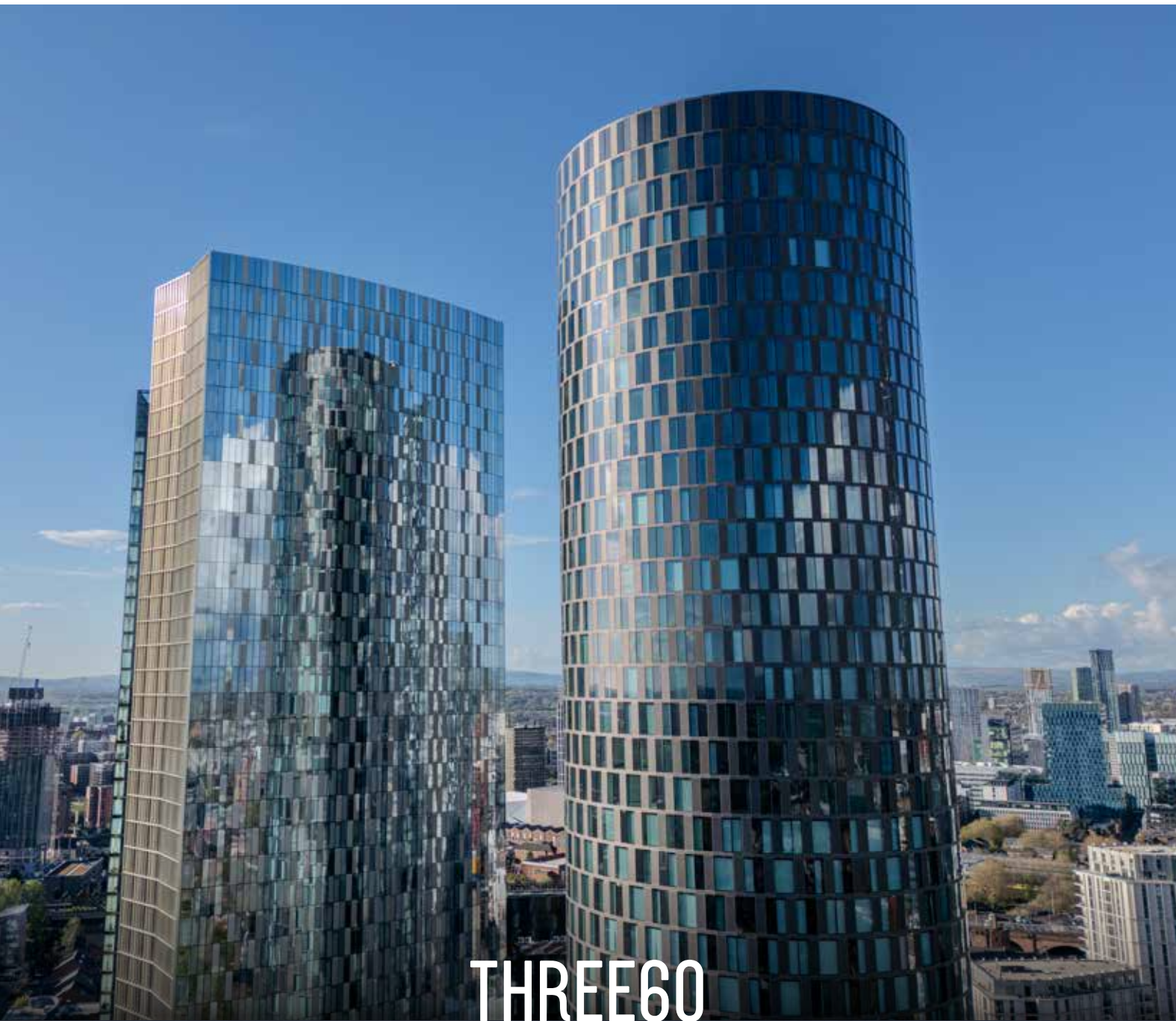
The Blade is an iconic building offering breathtaking views of the city centre. The development features one, two, and three bedroom high-quality apartments and penthouses.



The Blade also benefits from a state-of-the-art gymnasium, infrared sauna, spin studio, yoga studio, residents' lounge, private dining suite, as well as a co-working space. Externally, there is a terrace and a nearby landscaped park at ground level. The commercial unit also offers the opportunity for shops, cafes and restaurants.

thebladenewjackson.com





THREE60

1 TOWER
51 STOREYS
443 APARTMENTS
BUILD COMPLETE Q2 2024
ARCHITECT: SIMPSONHAUGH

Three60 is a truly unique building and offers 360° panoramic views of the city skyline. The development features one, two, and three bedroom apartments and also benefits from high-quality residential amenity.

This includes a gymnasium, spin studio, yoga studio, treatment rooms, residents' lounge, private dining suites, as well as a co-working space. Externally, there is a terrace and a landscaped park at ground level. The commercial unit offers the opportunity for shops, cafes and restaurants.

three60newjackson.com



FUTURE DEVELOPMENTS



We are currently 8 years into a 17-year masterplan across the New Jackson neighbourhood.

Significant progress has been made so far with the completion of Deansgate Square, Crown Street Elizabeth Tower & Victoria Residence, The Blade, Three60, Crown Street Primary School and New Jackson Park. Construction is in progress with Contour.

FUTURE DEVELOPMENTS INCORPORATING HIGH-QUALITY HOMES AND HIGH-QUALITY RESIDENTIAL AMENITY ARE ALREADY IN PLANNING TO COMPLETE THE NEIGHBOURHOOD.

PERFECTLY LOCATED WITHIN THE CITY

- Existing Developments
- Pipeline Developments
- Landmarks
- Train Stations
- Area / Districts



MANCHESTER

A VIBRANT & THRIVING CITY

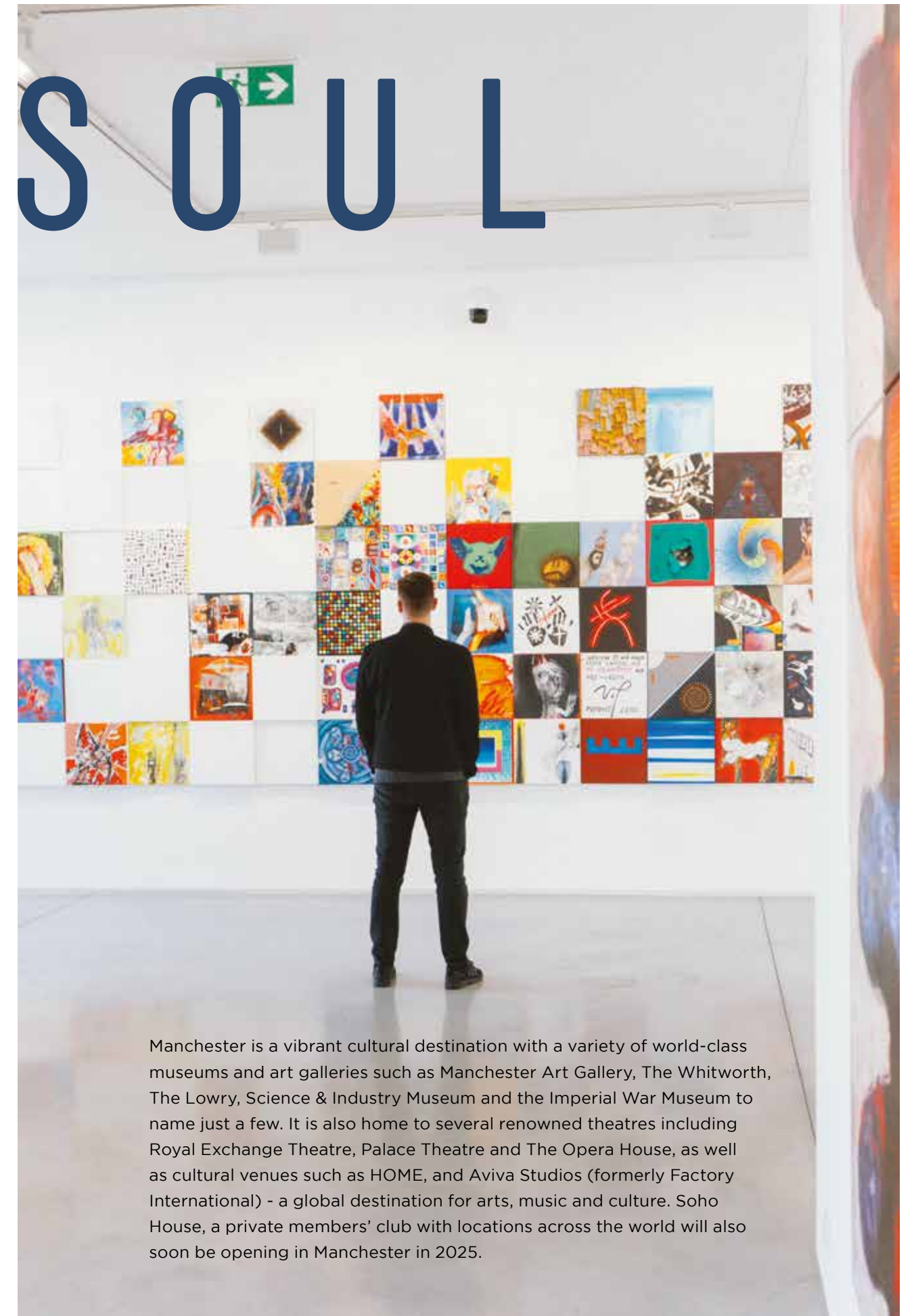


* <https://www.theguardian.com/travel/2022/nov/16/manchester-selected-as-top-travel-destination-for-2023-by-lonely-planet>
Ranked by the Economist Intelligence Unit in 2021 among the world's most liveable cities. It was the highest ranking UK city at 54th place ahead of London. *As voted by media brand Time Out, 2021



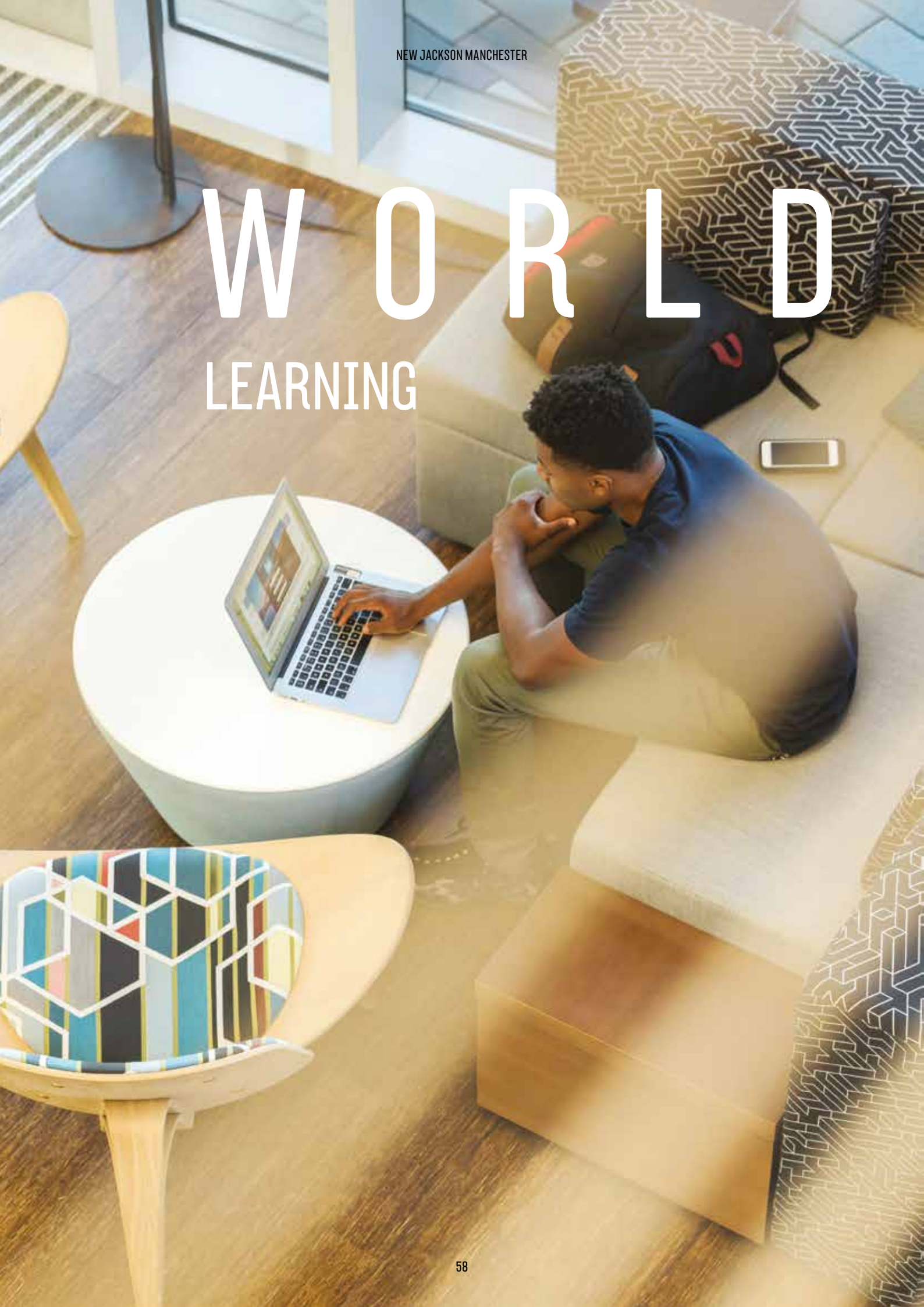
Manchester has long cemented itself as a great place to live, with it thriving city centre, a vibrant music and cultural scene, world-renowned shopping and restaurants - there's something to suit every lifestyle.

It's the second-largest city in the UK after London. Sophisticated designer boutiques, theatres, music venues, galleries, restaurants, cafes, bars and pubs for every taste - and pocket. Voted a must-visit destination for 2023* by Lonely Planet, the only UK city to make the list*, as well as the 'Most Liveable City in the UK'*** and the third 'Best City in the World'***, chasing San Francisco and Amsterdam - it's not up there with the biggest and best for nothing.



Manchester is a vibrant cultural destination with a variety of world-class museums and art galleries such as Manchester Art Gallery, The Whitworth, The Lowry, Science & Industry Museum and the Imperial War Museum to name just a few. It is also home to several renowned theatres including Royal Exchange Theatre, Palace Theatre and The Opera House, as well as cultural venues such as HOME, and Aviva Studios (formerly Factory International) - a global destination for arts, music and culture. Soho House, a private members' club with locations across the world will also soon be opening in Manchester in 2025.

WORLD LEARNING



CLASSES

Manchester has an extensive well-educated labour pool and is therefore an attractive place for companies to locate to. Those who have a presence in the city include: BBC, ITV, Google, Sky, Adidas, Unilever to name a few. Manchester is also home to one of the largest tech hubs located in Media City, Salford. This will play a vital role in helping to put the economy back on track.*

The UK is one of the best education hubs in the world, with a huge number of excellent state and independent schools, colleges and internationally-renowned universities. Manchester sits proudly at the top of the league. Five universities and higher education establishments including The University of Manchester, Manchester Metropolitan University, University of Salford, RNCM, and Northern Ballet School, draw almost 116,000 students from all over the globe. And for families, there will be a new primary school located within the neighbourhood - Crown Street Primary School, as well as 16 primary schools rated 'Good' or 'Outstanding' by Ofsted within a 1.5 mile radius, plus top-of-the class secondary and independent schools across the city.



* <https://cutt.ly/SavillsTech>

RENAKER

FORWARD-THINKING
CAPABLE
HONEST
COLLABORATIVE

CHANGING SKYLINES UNLOCKING POTENTIAL DELIVERING RESULTS

ABOUT RENAHER

Established in 2006, Renaker is now firmly recognised as Manchester's leading property developer with a proven track record of delivering sustainable, high-quality developments at pace.

MISSION

We focus on city centre brownfield regeneration, efficiently delivering spacious, high-quality homes with desirable amenities, whilst creating aspirational new neighbourhoods enabling people to enjoy and thrive.

APPROACH

Professional, straightforward and honest in our approach. We are collaborative with all our stakeholders in the local community, to help build successful, sustainable communities for the long term.

Scan the QR code opposite and take a look at who we are.



DAREN WHITAKER, FOUNDER & CHAIRMAN, RENAHER

"We are contributing in our own way to the transformation and regeneration of the city with a genuine, professional and honest approach to business...we enjoy what we do".

THINKING BEYOND



We add value by thinking beyond the realm of the traditional developer. In the first instance and at the point of conception, we try to create places and spaces which serve to enhance the life of those who choose to make it their home.

Through a commitment to high-quality design and materials, we apply this commitment not only to the residential homes we develop, but to the amenities and wider public spaces created.

We carefully consider masterplanning with various stakeholders and work closely with the city council, landowners, surrounding communities, alongside quality architects.

Beyond completion, we then look to make sure we've explored the operational stages too. Without a great relationship with the management companies we work with, much of the nuance and potential of the design could be lost. Our management companies are tasked to really push the envelope of service. Our on-site concierge management teams all have hospitality backgrounds, and we've applied principles learned from the hospitality industry to create a service level closer to that of a 5*hotel.

We are committed to creating sustainable neighbourhoods for the long term, and we deliver what we say we will do. We are trusted to achieve the aspirations of the local authorities and deliver the vision. We are extremely proud as majority landholder to be leading the creation of this exciting new community for Manchester.



RENAKER

SALES ENQUIRIES

Renaker Marketing Suite
8 Great Jackson Street, Manchester M15 4PA
T: 0161 464 5657

GENERAL ENQUIRIES

Renaker Head Office
1st Floor, NQ Building, 47 Bengal Street, Manchester M4 6BB
T: 0161 245 1150

RENAKER.COM

NEW JACKSON

M A N C H E S T E R



NEWJACKSONMANCHESTER.COM

RENAKER